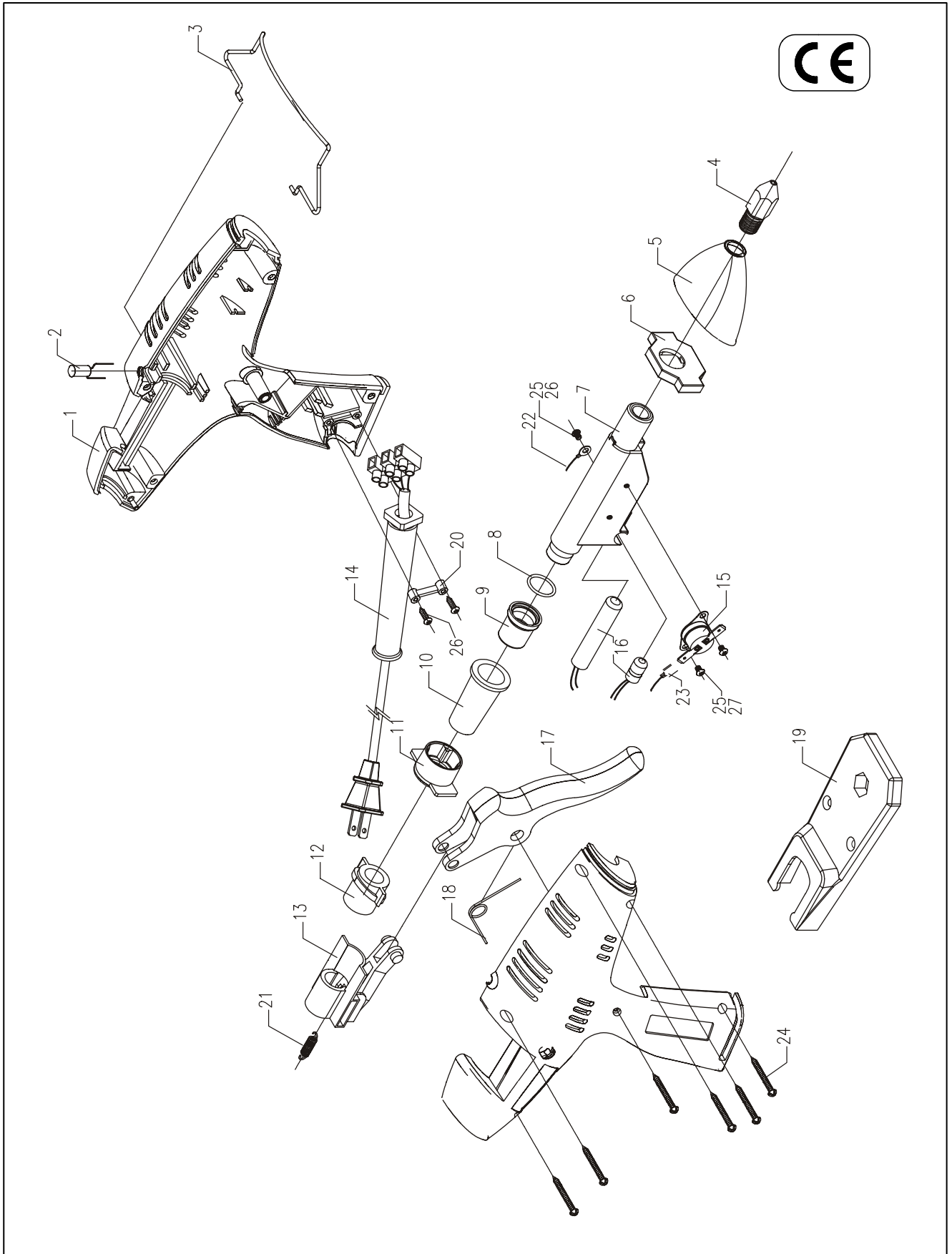


Typ
Type
Tipo

Schmelzklebepistole 270 (Art.-Nr. 12500111)



1	Gehäuse Handles pair Corps Cuerpo	14504950	12	Hülse Grommet Douille Adaptador	14504962	18	Feder Spring Ressort Muelle	14504974
2	Kontrollleuchte, 230 V Warning light, assy, 230 V Voyant de contrôle, 230 V Luz de aviso, 230 V	14504951	13	Vorschub Feed mechanis. Cliquet d' avance Empujador	14504963	19	Geräteständer Gun stand Support de l'appareil Soporte de la pistola	14504975
2	Kontrollleuchte 120 V Warning light, assy, 120 V Voyant de contrôle, 120 V Luz de aviso 120 V	14504952	14	Anschlußkabel (UK) Cordset assy. (UK) Cable (UK) Cable (UK)	14504964	20	Kabelklemme Cord clamp Serre-câble Cable con abrazadera	14504976
3	Aufhänger Wire hanger Suspension Colgador clavadora	14504953	14	Anschlußkabel (EURO) Cordset assy. (EURO) Cable (EURO) Cable (EURO)	14504965	21	Feder Spring Ressort Muelle	14504977
4	Düsenbaugruppe Nozzle assy Buse cpl. Boquilla completa	14504954	14	Anschlußkabel (Unterminated) Cordset assy. (Unterminated) Cable (Unterminated) Cable (Unterminated)	14504966	22	Erdungskabel Earth wire assy Mise à la terre Cable tierra	14504978
5	Düsenabdeckung Nozzle shroud Cache Tapa boquilla	14504955	14	Anschlußkabel (USA) Cordset assy. (USA) Cable (USA) Cable (USA)	14504967	23	Kabel Cordset Cable Cable	14504979
6	Distanzstück Spacer Guide à distance Distanciador	14504956	15	Thermostat, (EVA) Thermostat, (EVA) Thermostat, (EVA) Termostato, (EVA)	14504968	24	Schraube Screw	14504980
						25	Vis	14504981
						26	Tornillo	14504982
7	Schmelzkammer Heater housing Chambre de fusion Camara de fusion	14504957	15	Thermostat, (LOW MELT) Thermostat, (LOW MELT) Thermostat, (LOW MELT) Termostato, (LOW MELT)	14504969	27	Scheibe Washer Rondelle Arandela	14504983
8	O-Ring O-ring Joint torique Aro torico	14504958	15	Thermostat, (Polyamide) Thermostat, (Polyamide) Thermostat, (Polyamide) Termostato, (Polyamide)	14504970			
9	Einlaßadapter Inlet Adapter Anneau de adapteur Adaptador	14504959	16	Sicherung, 230 V Heater/Thermal fuse assy 230 V Sous-ensemble fusible thermique 230 V Cortacircuito fusible 230V	14504971			
10	Einlaßzylinder Inlet sleeve Anneau de cylindre Manguito de entrada	14504960	16	Sicherung, 120 V Heater/Thermal fuse assy 120 V Sous-ensemble fusible thermique 120 V Cortacircuito fusible 120 V	14504972			
11	Einlaßhülse Inlet clamp Anneau de douille Adaptador	14504961	17	Auslöser Trigger Levier de détente Gatillo de disparo	14504973			